



THE SEDONA

MODEL ONE

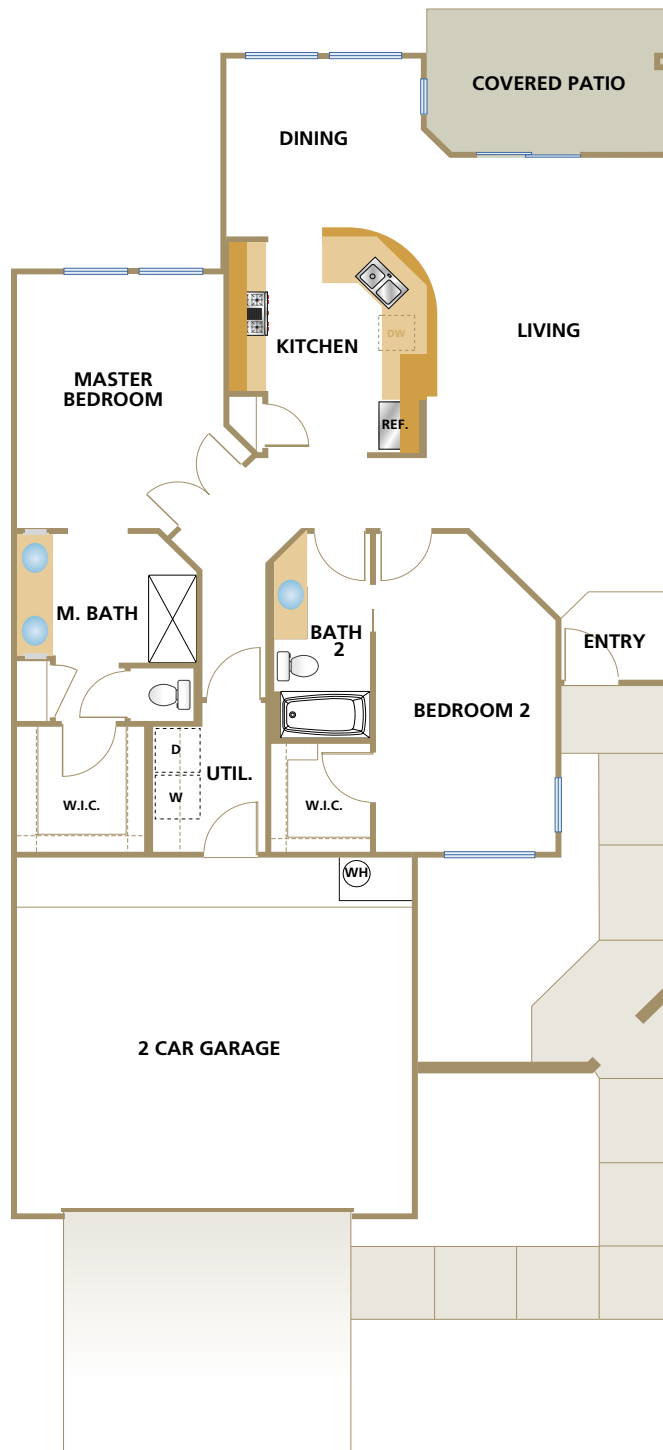
**Barclay
Village**

A GATED ACTIVE ADULT COMMUNITY

**NEW SUN**
Homes

THE SEDONA

1,415 SQUARE FEET



**Barclay
Village**

A GATED ACTIVE ADULT COMMUNITY

NEW SUN
Homes

Exterior elevations and floorplans are artist's conception and are for illustration only. All square footage listed is approximate and subject to construction variations. Window sizes and design may vary between elevations. In the interest of continued improvements, New Sun Homes reserves the right to change or modify prices, specifications, designs, materials, and features without prior notice or obligation. Please contact your sales representative for details.